



TRANSPORT INFRASTRUCTURE SECTOR

During more than 60 years, EPTISA has gained in-depth experience and expertise in the entire transport sector, offering solutions for all modes of transportation while paying special attention to the environmental aspects, technical quality, economical optimisation, safety in construction and operation, functionality and sustainability in all our projects.

Our services cover all phases of the project life cycle from concept to completion: Feasibility Studies, Environmental Impact Assessment, Detailed Design, Quality Control and Works Supervision, contract management, general consultancy services and Technical Assistance, as well as Project Management.

The experience in both design and works supervision and our staff highly specialised in roads, highways, airports and railways projects are an immense asset in the transport sector. The introduction of the latest technologies has allowed us to reinforce our leadership in the sector by combining experience and innovation towards projects with higher added value across the world and South East Europe in particular.

EPTISA is actively involved in all phases of all kinds of transport projects, providing effective solutions for the following services:

- Traffic studies
- Studies, analysis and evaluation of environmental impact
- Feasibility Studies and transport master plans
- Geological studies and materials testing
- Preliminary and Detailed Designs
- Project management and administration of construction works contracts
- Supervision of construction works of roads, railways, ports and airports
- Technical assistance and quality control
- Road safety engineering and audits
- Institutional strengthening.

EPTISA is specialised in providing various trainings for project implementation units and capacity building and institutional strengthening of transport authorities and their staff. Through an integral approach, we are able to develop durable, efficient and safe solutions.

MAIN PROJECTS



SUPERVISION OF SECONDARY AND LOCAL ROADS PROJECT, ALBANIA, 2013-2016, EBRD/EIB/KFW, 3.5 M€

The main objective of this consulting assignment is the supervision of the contracted civil works for the upgrade of 1,500 km of Secondary and Local Roads in Albania, including monitoring, inspection and reporting supervision activities. The country's road network comprises 3,412 km of national roads administered by the Ministry of Public Works and Transport (MoPWT) and directly managed by the General Roads Department (GRD), and about 12,000 km of local roads.



PREPARATION OF PRELIMINARY STUDIES AND DESIGNS FOR IMPROVEMENT OF THE ROAD ON THE SEETO ROUTE 2A: LAŠVA – JAJCE – UGAR (INTERENTITY BOUNDARY LINE – IEBL) – BANJA LUKA – BANJA LUKA BYPASS, BOSNIA AND HERZEGOVINA, 2016-2017, EU-IPA, 770,000€

This project's goals are to assist in improving economic development in BiH and enable better connection and adequate levels of service for the central regions of Zenica and Sarajevo with the regions of Banja Luka, Prijedor and Lijeve, but in particular the EU (Croatia), and candidate countries (Montenegro and Serbia). EPTISA provides assistance through preparing technical report on the current status of the road, preliminary solutions/conceptual designs, traffic study, multi-criterion analysis, pre-feasibility study, preliminary EIA etc.



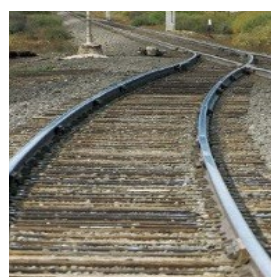
PREPARING PRELIMINARY STUDIES AND DESIGNS FOR CONSTRUCTION OF EXPRESSWAY ON THE SEETO COMPREHENSIVE NETWORK ROUTE 3: SARAJEVO-VARDIŠTE, BOSNIA AND HERZEGOVINA, 2016-2017, EU-IPA, 680,000€

The overall objective of this project is to assist in improving economic and social development in BiH through improvement of the transport infrastructure in line with the priorities of the SEE Comprehensive Transport Network and enable creation of a functioning infrastructure regulatory framework for all transport sub-sectors. EPTISA provides assistance through preparing multiple analysis, preliminary solutions/conceptual designs, traffic study, pre-feasibility study, preliminary EIA, environmental management plan, etc.



SUPERVISION OF DESIGN AND CONSTRUCTION WORKS ON BANJA LUKA – DOBOJ MOTORWAY, SECTION: PRNJAVOR – DOBOJ, BIH, 2012-2016, EBRD, 6.8 M€

Purpose of this project was to assist and advise the Employer in administration of the Contract for the Design and Build of new motorway, carrying out the duties of the Engineer by FIDIC Conditions of Contracts. EPTISA ensured the smooth implementation and the satisfactory completion of the Works Contracts within the allocated budget, the environmental requirements, and quality standards as well as within the time-scale stated in the Contract.



SUPERVISION FOR RENEWAL WITH RECONSTRUCTION OF THE RAILWAY SECTION BITOLA-KREMENICA, AS PART OF XD OF CORRIDOR X, MACEDONIA, 2015-2018, EU-IPA, 900,100€

The overall objective of the project is the rehabilitation of railway link along the TEN-T- Corridor X, branch XD, increasing its capacity for better cohesion with the EU Member States and neighbouring countries. EPTISA is responsible for providing supervision services for single-track railway section Bitola-Kremenica of a length of approx. 17 km, in accordance with FIDIC.



RAILWAY CORRIDOR VIII – CONSULTING SERVICES FOR SUPERVISION SERVICES AND PROJECT IMPLEMENTATION UNIT ASSISTANCE, MACEDONIA, 2014-2017, EBRD, 2.6 M€

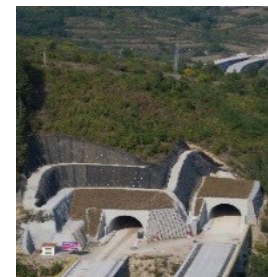
This project aims at supporting the rehabilitation of the first section from Kumanovo to Beljakovce which used to be operational until mid-1996. EPTISA is engaged according to EBRD's procurement policies and rules for consultancy services, acting as the Engineer and carrying out all regular duties required of the Engineer in the civil works conditions of contract and monitoring and reporting pursuant to the relevant Loan Agreement.

MAIN PROJECTS



SUPERVISION OF CONSTRUCTION WORKS OF CORRIDOR X, E-75 MOTORWAY – TUNNELS PREDAJANE AND MANAJLE, SERBIA, 2012 – 2017, EU-IPA, 2.5 M€

The overall objective of this project is to contribute to enhancement of traffic flows on Corridor X and to improve environmental and safety conditions of the Serbian road transport network in line with EU standards. This represents the most important traffic corridor in the Serbian traffic system. Eptisa's services on this construction project include supervision of motorway construction works on the E-75 motorway Corridor X (Grdelica – Vladicin Han section) tunnel Predejane (1.112 m) and tunnel Manajle (1.804 m), in accordance with national laws and professional standards.



SUPERVISION OF CONSTRUCTION WORKS ON HIGHWAY E-80, SERBIA, 2011-2017, WB, 14.5 M€

The road, that will become a crucial part of the main transit road from Central Europe to Turkey, consists of 60 kilometres and includes 43 bridges and viaducts, 4 tunnels, and 3 interchanges. EPTISA's consulting services comprise supervision of construction works on the highway E80, section Prosek-Dimitrovgrad (Corridor Xc), excluding sub-section Ciflik-Piroć (East), in total length of 59,6 km all in accordance with the Project Implementation Plan. Works on the E-80 project include construction of highway alignment, bridges, tunnels and interchanges on 4 works sections.



SUPERVISION OF DESIGN AND CONSTRUCTION WORKS ON BELGRADE BY-PASS, SECTION A, BATAJNICA – DOBANOVCI, SERBIA, 2010-2012, EU CARDS, 1.9 M€

The section A of the Belgrade city Road Bypass has a connection with the existing E75 (from Hungary via Novi Sad) at Batajnica. The section A route proceeds in the southern direction to join the existing E70 highway (from Italy and Austria via Zagreb, Croatia) at the interchange at Dobanovci. Executed works were: preliminary works, earthworks, paving, construction of five bridges with associated structures across railway, streets and local roads, road furniture and traffic signs.



CONSULTANCY AND TECHNICAL ASSISTANCE FOR WORKS SUPERVISION OF THE NEW HIGH SPEED RAILWAY PLATFORM VITORIA-BILBAO-SAN SEBASTIÁN, SECTION: ESCORIAZA-ARAMAIO AND ARAMAIO-MONDRAGÓN, SPAIN, MINISTRY OF PUBLIC WORKS, 2007-2015, 8.3 M€

Eptisa developed detailed engineering project and implemented monitoring, construction supervision of works and technical assistance during tendering process, construction works, including financial and technical aspects of the activity for supply materials for the above mentioned section of the newly build high speed rail giving access to Northern Spain. The project used the latest high-tech and in addition the progress of construction, supervision and monitoring following the EU directives and Spanish law equivalents.



SUPERVISION OF THE CONSTRUCTION WORKS OF SECTIONS I & II OF LA SAGRA HIGHWAY AND SECTIONS I OF IV CENTENARY HIGHWAY, SPAIN, 2005-2012, GOVERNMENT OF CASTILLA LA MANCHA, 5.4 M€

Eptisa performed consulting services and technical assistance for Project Management, Control and Monitoring during the execution of construction works of the Highway La Sagra Sections I&II and Section I of IV Centenary Highway. Total length of the highway (physically separated carriageways - 2 lanes and 1 one lane for emergency stop in each direction) is 98km. Project was implemented under conditions of contract equivalent to FIDIC Red Book.



MARMARAY PROJECT, GEBZE – HALKALI COMMUTER RAIL UPGRADING, TURKEY, 2012-2015, STATE BUDGET, 13.6 M€

This Project is one of the major transportation infrastructure projects in the world at present. The entire upgraded and new railway system will be approximately 76 km long. The Project consists of the developing connection of the rail lines between the European and the Asian side in Istanbul through an underwater tunnel in the Bosphorus Strait. Services provided by EPTISA included overall Project Management, assistance on technical and contractual matters, including conceptual, preliminary/basic and detailed design.





eptisa
REGIONAL OFFICE FOR SEE
www.eptisasee.com

Nenad Zivanovic,
Head of Infrastructure Department

8, Dubljanska St., 11000 Belgrade (Republic of Serbia)
Tel: +381 (11) 2400 222 / 211 / 233
Fax: +381 (11) 2400 111 (or +34 91 182 02 22)
nzivanovic@eptisa.com
www.eptisasee.com